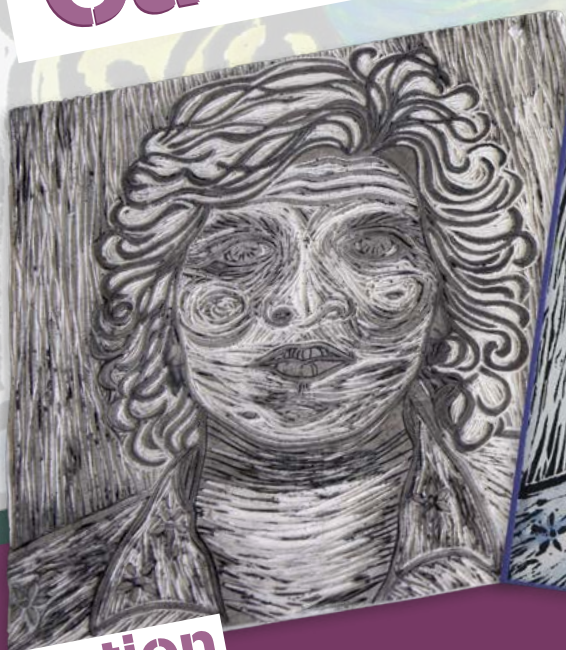


Safety-Kut[®] Portrait Paper Cast and Print



Introduction

The art of block printing has been around for centuries, using wood as a relief surface for printing. In the early 20th century, artists discovered that linoleum was an easier and less expensive alternative to wood. In the 1980s, Nasco created Safety-Kut[®], a material that is easier and safer to use than linoleum. Safety-Kut[®] cuts smoothly without skipping, won't slip away while being carved, and does not crack, break, or crumble like traditional linoleum. The structure of a carved piece of work allows it to be used as a mold for a paper cast. Students can create their portrait in two different art forms using the same carved piece of Safety-Kut[®].



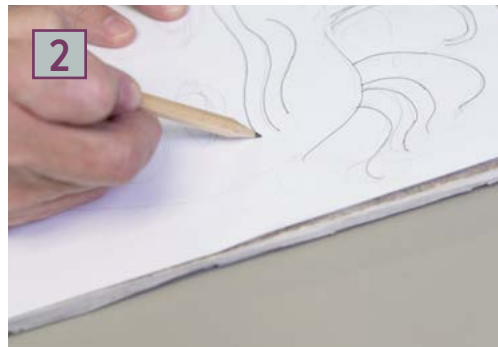
Objectives

Students will...

- Learn printmaking and papermaking.
- Create self-portraits and learn how to translate work to a block print and create a paper cast.
- Explore and implement the processes of printmaking and papermaking.

Paper Cast Portrait Instructions

1. Create a self-portrait drawing.
2. Transfer drawing using carbon paper or the lead of a pencil. Cover the back of the drawing with graphite lead pencil. Put the drawing on top of the Safety-Kut® with the graphite-coated side down. Trace your self-portrait firmly so graphite will transfer the lines onto the Safety-Kut®.
3. Carefully cut away desired areas using the lino cutting tools.
4. When piece is finished:
 - A. Create handmade paper using paper making materials and instructions provided.
 - B. Press sheet firmly into Safety-Kut® using the sponge. Make sure all areas are pressed firm.
5. Let dry completely. It may take up to 24 hours to dry.
6. Remove dry cast to reveal self-portrait relief.



Standards

VA:Cr1.1.6a — Combine concepts collaboratively to generate innovative ideas for creating art.

VA:Cr2.1.6a — Demonstrate openness in trying new ideas, materials, methods, and approaches in making works of art and design.

VA:Cn1.1.6a — Analyze how art reflects changing times, traditions, resources, and cultural uses.

Block Print Self-Portrait Instructions

1. Using a brayer, apply ink over the remaining raised areas of the Safety-Kut®.
2. Lay paper over Safety-Kut®, then apply pressure rubbing with a baren to transfer image to the paper.
3. Remove paper to reveal print.
4. When the print is dry, it can be embellished by painting it with acrylic paint.



Safety-Kut®



Materials List

- Nasco White All Media Drawing Paper, 500 sheets, 9" x 12", 50 lb. — 9728251
- Nasco Safety-Kut® Printmaking Blocks, 8" x 10" — 9729095
- Speedball® Lino Cutter Assortment No. 1 — 9701402
- Inking Plate/Bench Hook, 7½" x 10¼" — 2200171
- Nasco Water-Soluble Block Printing Ink, 8-oz. jar, black — 9718146(A)
- Speedball® Red Baron™ — 9724408
- Ink Mixing Tray, pkg. of 10, 6½" x 6½" — 9722405
- Subi® Block Printing Paper, 100 sheets, 9" x 12", white — 9707438
- Hard Rubber Brayer, 4" — 9705248
- KitchenAid® 5-Speed Blender — WA32185
- Arnold Grummer's® Group Dip Large Handmolds — 9723809
- Nasco Dry Pulp — 9705486
- Yellow Plastic Tote Tray, 19½" L x 13½" W x 4½" D — 9716782
- Cellulose Sponges, pkg. of 4 — WA07590

Nasco
education

1.800.558.9595
NascoEducation.com

Lesson Plans are developed with teachers with no claim of original authorship.