



# Leaf Identification

(Fall Activity)

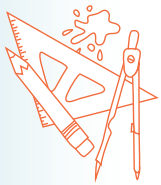
Developed by Linda Roberts  
Grades K-6



## Objectives

Students will...

- Learn the names of four different trees.
- Create prints of the four different leaves.
- Collect leaves to match the printed leaves.



## Materials

- Nasco Leaf Stamp Set — Cat. No. 9714351
- PRANG® Washable Green Tempera Paint — Cat. No. 9730394(D)
- 12" x 18" Sheets of White Paper (one per student)
- Pencils
- Sponge Brushes

## Directions

Before the activity, the teacher will locate trees in the vicinity that match four of the six leaf stamps (sugar maple, white oak, red oak, elm, tulip tree, and ginkgo). Use these stamps for the activity.

### Day 1:

- Have an adult or two to help with the printing process. Students should wear art smocks. Cover the tables with newspaper.
- Each student will fold a 12" x 18" sheet of white paper lengthwise and then crosswise, creating four equal spaces for printing. Students will write their names on their papers. On the board or on a piece of chart paper, write the names of the leaves they will be printing. Have students copy one leaf name at the top of each of their four squares on the white paper. Remind them to write small so they don't fill the entire square with the name.
- Help students paint one leaf stamp with the sponge brush and a small amount of paint. Press the stamp in the correct space to make a print. Repeat for the other three stamps. Allow the paint to dry. Discuss the leaf shapes with the class. Have them share their observations of the leaf prints.

### Day 2: Mini Field Trip

- Give each student a bag to put their leaves in. The teacher will also need a bag to collect extra leaves.
- Take the class outside to collect leaves from the trees you previously identified. Students should be able to pick up leaves from the ground. Give the students hints on how to find the leaves, for example a ginkgo leaf looks like a fan, a maple leaf is shaped like your hand. Lead the students to the correct trees as a group.
- Bring the leaves back to the classroom. Make sure each student has all four leaves. You may need to give them some of the extra ones you collected.
- Have the students match their leaves to the prints. If their matches are correct, they may glue the real leaves next to the matching print.

## Review

What kinds of leaves did you collect? How are they similar to each other, or different? Describe the shapes of the leaves. Have students take their prints home and teach their parents the names of the leaves.



For additional FREE lesson plans go to...  
[NascoEducation.com/lessonplans](http://NascoEducation.com/lessonplans)



## Assessment

Teacher observation, participation in activities, cooperation, handling materials, participation in oral discussions, completeness of projects.



# Check out these other nature-based products from Nasco!



## Leaves and Seeds of Common Trees Identification Mounts

This collection of 16 mounts is a nice survey of trees across the U.S. Each species is represented by both leaves and seeds. Leaves and twigs are pressed and the fruits have been freeze-dried for presentation.

**SB37259**

**BioQuest**  
Observe Question Measure Think Predict

## Tree Growth Study Kit

By Gari F. Walz.

Designed to show students the variations of different tree species. Students learn how seasonal growth changes the appearance of layers of growth within the tree, and find that spring wood and summer wood combine to produce annual rings. They also learn how to estimate tree age by examining the annual rings of three different tree rounds. Kit includes three tree rounds (one each of oak, pine, and walnut), a hand magnifier, colored marking pins, a metric ruler, six reproducible student guides, one teacher guide, reproducible activity sheets, and *Trees: A Golden Guide* book.

**SB22657**



**BioQuest**  
Observe Question Measure Think Predict

## Biodiversity Tree Study Kit

By Gari F. Walz.

Students will have the experience of working with six different varieties of tree species from a temperate climate region of North America. Information on the biodiversity of hardwood and softwood trees is provided, with directions for students to engage in hands-on inquiry exercises. Similar internal tree structures will be compared, while the variation between species will also be identified. Illustrations and directions are included in the study guides. Kit includes six assorted tree rounds (two softwood and four hardwood species), 15 hand magnifiers, colored marking pins, 15 metric rulers, 15 reproducible student study guides, reproducible student activity sheets, teacher study guide, and a tree round information sheet to assist with tree identification.

**SB26418**



## Plant Mounting Sheets

Cardboard herbarium sheets, size 11½" x 16½". Printed legend in lower right-hand corner for recording data. No rag content. 140-lb. weight paper. Pack of 25.

**C09647**

**Nasco**  
education

1.800.558.9595  
NascoEducation.com

Lesson Plans are developed with teachers with no claim of original authorship.

U27697

For additional FREE lesson plans, go to [NascoEducation.com/lessonplans](http://NascoEducation.com/lessonplans)